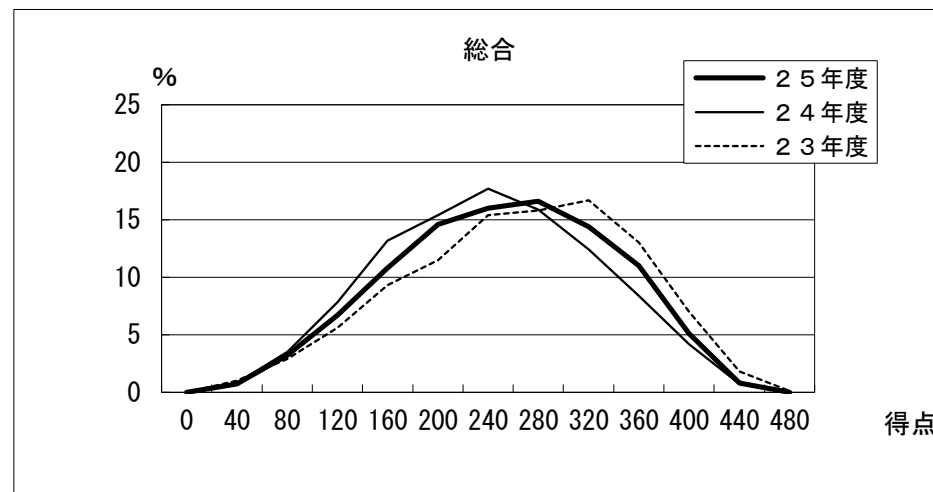
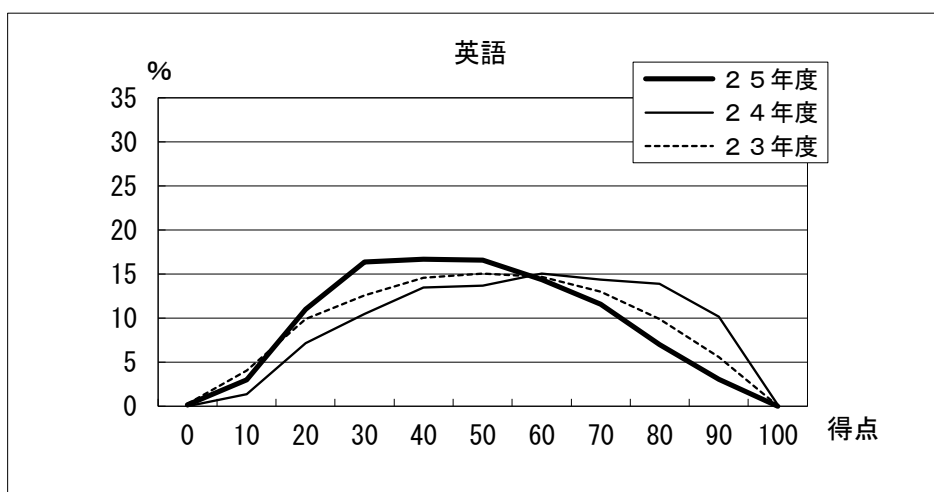
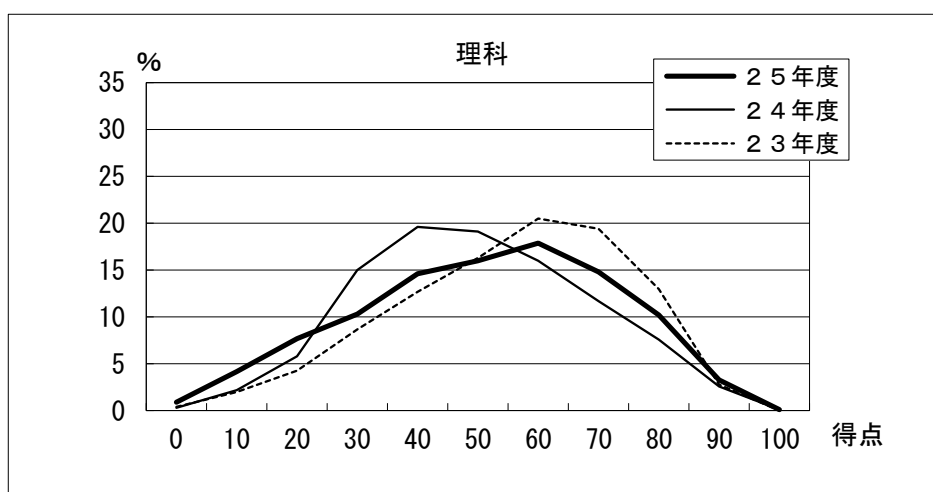
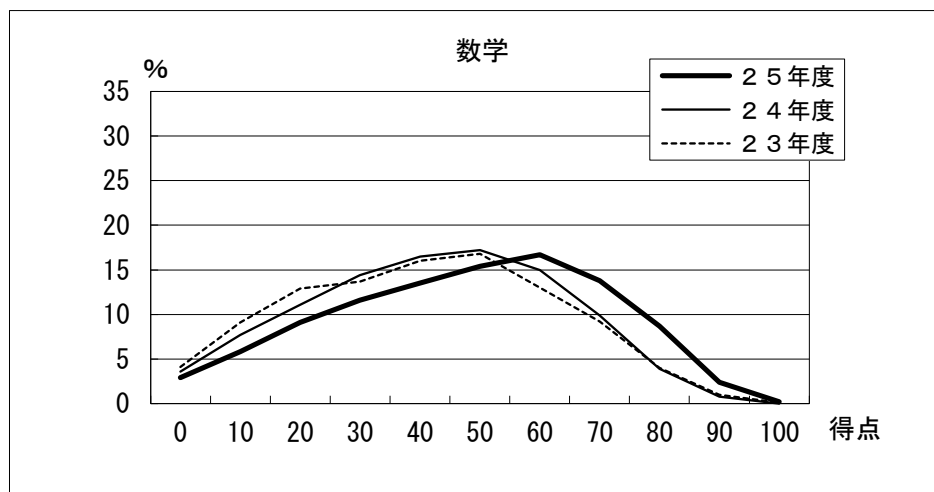
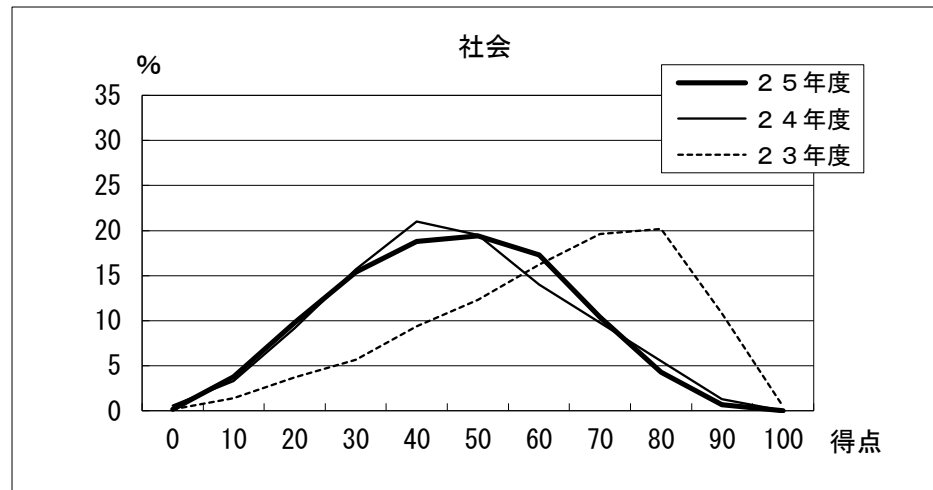
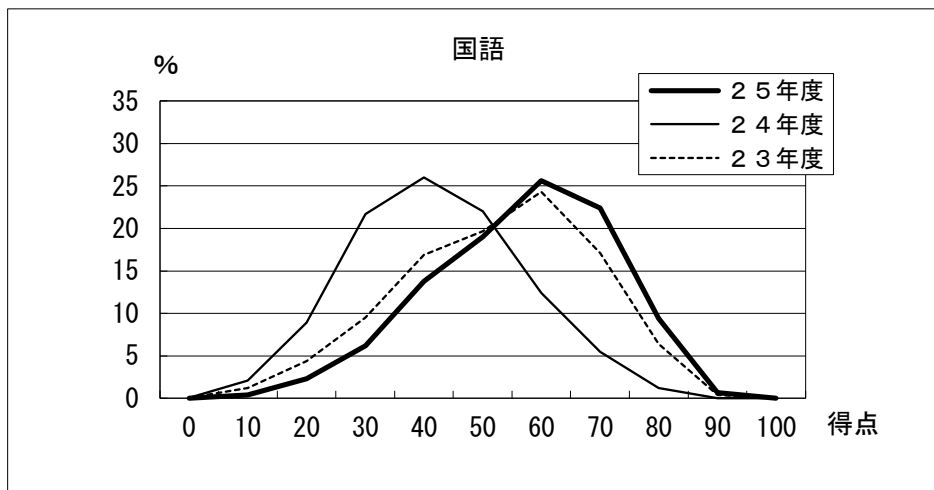


## 4 得点分布



(参考) 過年度 平均点一覧

選抜年度	国語	社会	数学	理科	英語	総合
H14	66.7	62.8	62.3	64.5	59.4	315.6
H15	61.1	53.8	59.1	62.3	55.6	292.0
H16	59.2	56.2	60.7	62.8	57.1	296.0
H17	60.3	62.0	49.7	62.1	60.7	294.9
H18	60.7	59.8	54.4	57.8	56.6	289.2
H19	61.1	62.7	57.9	58.8	58.5	298.9
H20	56.4	58.6	40.2	63.9	54.6	273.7
H21	59.6	63.6	49.1	66.4	61.1	299.8
H22	57.9	55.7	47.5	60.6	56.1	277.8
H23	57.0	66.8	45.4	60.3	55.1	284.7
H24	46.7	51.7	46.8	54.1	61.1	260.5
<b>H25</b>	<b>61.1</b>	<b>50.3</b>	<b>52.3</b>	<b>55.7</b>	<b>52.2</b>	<b>271.6</b>